

ST

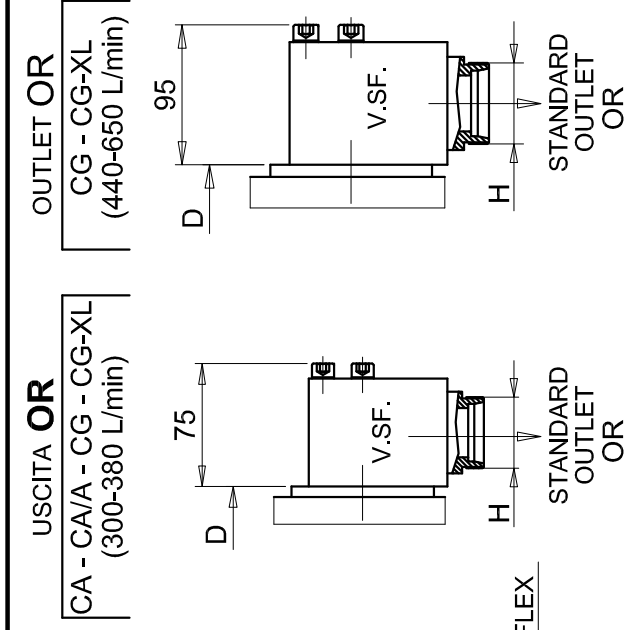
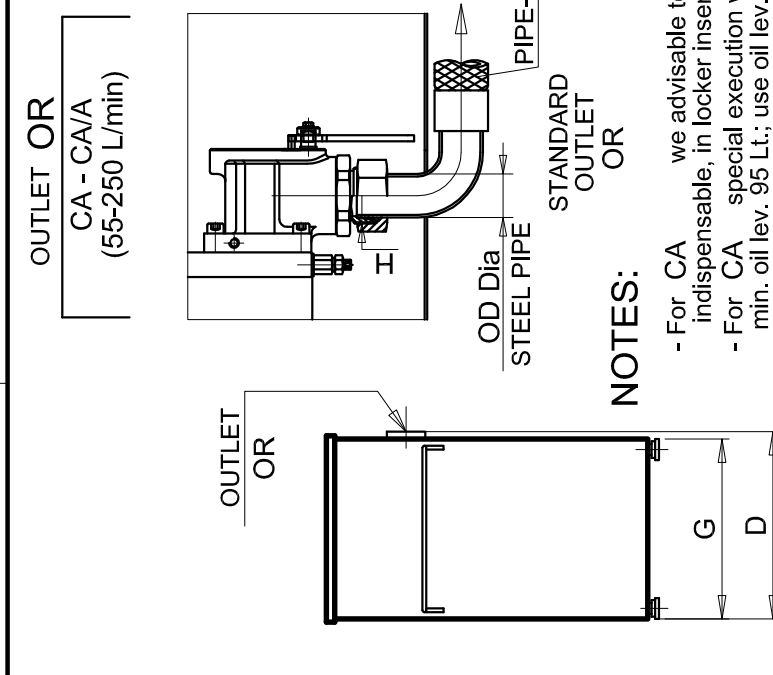
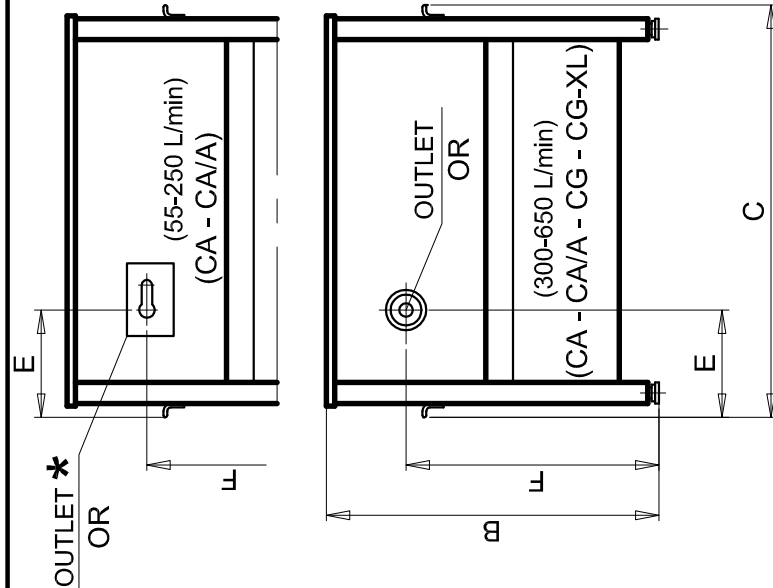
HYDRAULIC POWER UNIT DIMENSIONS

DATE

12/18

DWG Nr.

9211



OUTLET *
OR

(55-250 L/min)
(CA - CA/A)

OUTLET OR
CA - CA/A
(55-250 L/min)

USCITA OR
CA - CA/A - CG - CG-XL
(300-380 L/min)

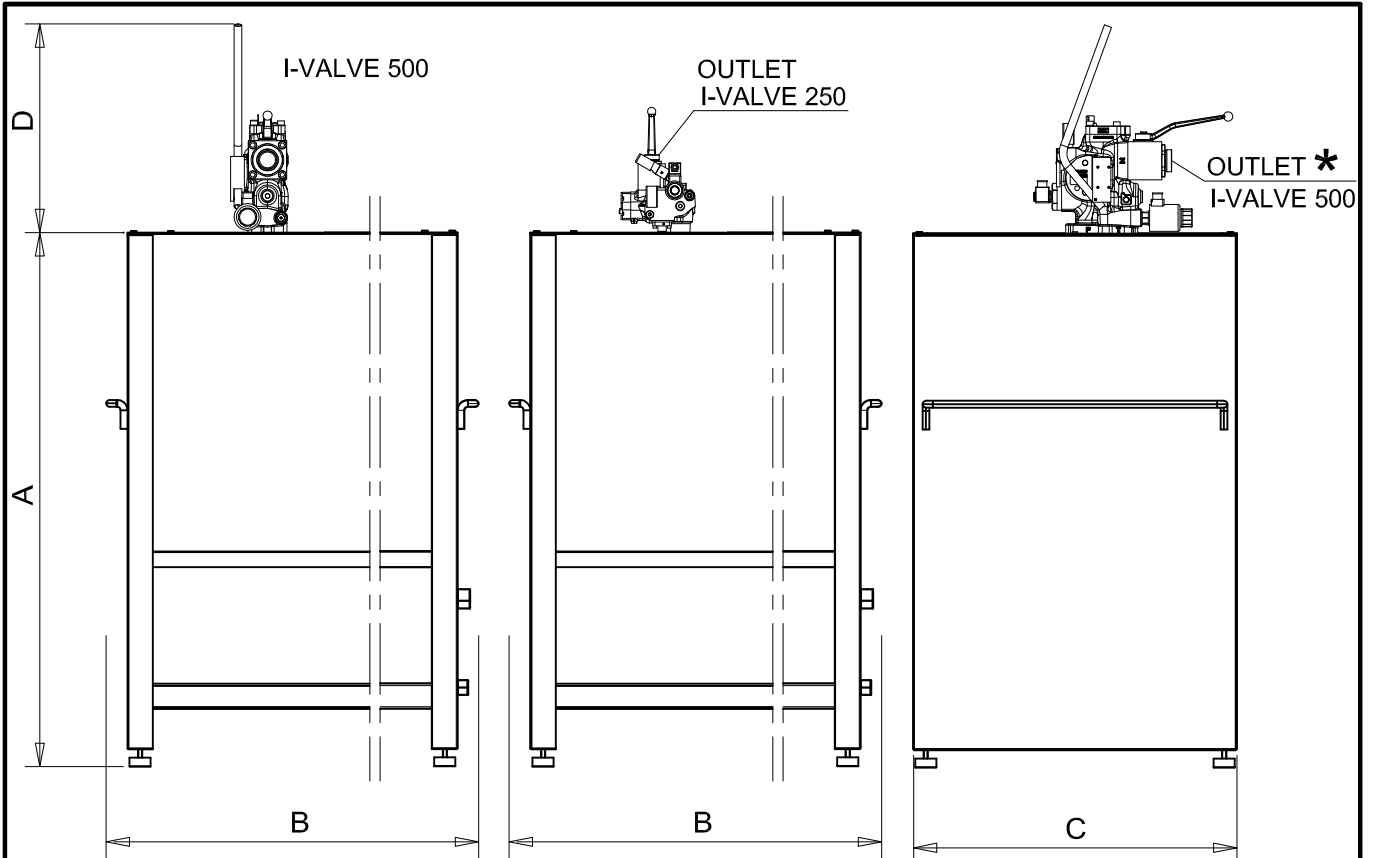
OUTLET OR
CG - CG-XL
(440-650 L/min)

NOTES:

- For CA we advisable to out (★) with PIPE-FLEX, while is indispensable, in locker insert. (Lenght.: MIN. 2 mt.)
- For CA special execution with 50 HP motor: min. oil lev. 95 Lt.; use oil lev. 205 Lt.; MAX oil lev. 290 Lt.
- OR: Horizontal standard outlet for units
- MORIS S.r.l., ALWAYS RECOMMENDS THE USE OF A STAR/DELTA STARTING FOR ENGINES WITH A POWER OF 16 Hp (12 Kw)

*GENERAL ALLOWANCES: ±5 mm"

UNIT TYPE	MOTOR POWER CV (KW)	PUMP DELIVERY L/1'	A		B (mm)	C (mm)	D (mm)	E (mm)	F (mm)	G (mm)	H	WEIGHT WITHOUT OIL (Kg)	QUANTITY OF OIL (LITRES)		
			PIPE FLEX	OD, DIA PIPE STEEL (mm)									MIN. LEV.	USE TOTAL	
CA	13 - 40 (9.5 - 30)	180 - 250	1 1/2 (DN38)	42	1130	1000	402	930	560	M	M 52x2	200	55	245	300
		313					300 - 380						220	830	1050
CA/A	13 - 50 (9.5 - 37)	180 - 250	1 1/2 (DN38)	42	1130	1490	402	930	560	M	M 52x2	315	160	310	470
		313					300 - 380						220	830	1050
CG	16 - 100 (12 - 75)	300 - 380	1 1/2 (DN38)	42	1260	1490	313	1060	765	M	M 52x2	360	220	530	750
		313					440 - 650						220	830	1050
CG-XL	16 - 100 (12 - 75)	300 - 380	1 1/2 (DN38)	42	1560	1490	313	1360	765	M	M 52x2	400	220	830	1050
		313					440 - 650						220	830	1050



THREE-PHASE MOTOR:
230 V - 400 V - 415 V; (50/60 HZ)
PUMP:
PRESSURE:

FROM 6 / 80 CV (4.5 / 60 kW)
FROM 180 / 500 L/1'
FROM 12 /60 BAR

DIMENSIONS	TYPE
	CG-IV
A	1260
B	1490
C	765
D / I-VALVE 250	300
D / I-VALVE 500	470

OIL QUANTITY	TYPE
	CG-IV
MINIMUM LEVEL	220 litres
USEFUL OIL	600 litres
TOTAL OIL	750 litres

POWER UNIT WEIGHT WITHOUT OIL	TYPE
	CG-IV
	360 KG

NOTE:

- DISTRIBUTOR: I-VALVE 250; I-VALVE 500
- REF TABLE N° 9017 TO CHOOSE PUMP AND POWER MOTOR

PUMP (L/1')	180-250	300-380	440-500
I-VALVE	250/250	500/500 (*)	500/500 (*)
OUTLET (*)	1" (M36x2) 1"1/4 (M45x2) 1"1/2 (M52x2)	1"1/2 (M52x2)	1"1/2 (M52x2) 2" (GAS)

UT		DATA SHEET POWER UNIT CG-IV	DATE	11/18
			DWG N.	9018/CG-IV