

ST

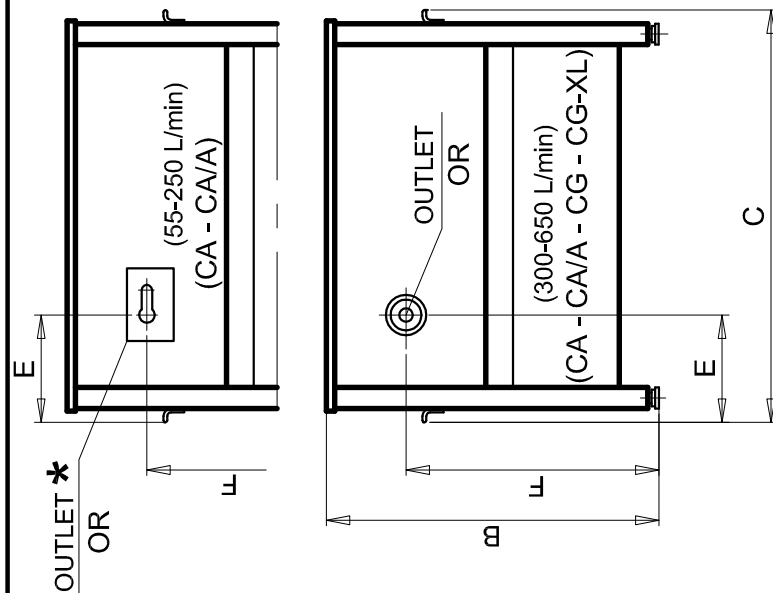
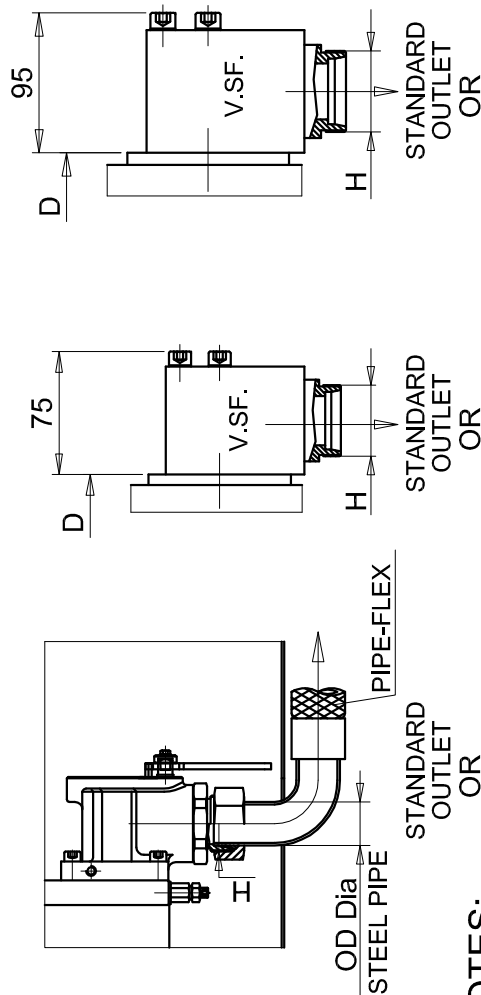
## HYDRAULIC POWER UNIT DIMENSIONS

DATE

12/18

DWG Nr.

9211

OUTLET OR  
CA - CA/A  
(55-250 L/min)USCITA OR  
CA - CA/A - CG - CG-XL  
(300-380 L/min)OUTLET OR  
CG - CG-XL  
(440-650 L/min)

## NOTES:

- For CA we advisable to out (★) with PIPE-FLEX, while is indispensable, in locker insert. (Lenght.: MIN. 2 mt.)
- For CA special execution with 50 HP motor: min. oil lev. 95 Lt.; use oil lev. 205 Lt.; MAX oil lev. 290 Lt.
- OR: Horizontal standard outlet for units
- MORIS S.r.l., ALWAYS RECOMMENDS THE USE OF A STAR/DELTA STARTING FOR ENGINES WITH A POWER OF 16 Hp (12 Kw)

UNIT TYPE	MOTOR POWER CV (KW)	PUMP DELIVERY L/1'	A		B (mm)	C (mm)	D (mm)	E (mm)	F (mm)	G (mm)	H	WEIGHT WITHOUT OIL (Kg)	QUANTITY OF OIL (LITRES)		
			PIPE FLEX	OD, DIA PIPE STEEL (mm)									MIN. LEV.	USE TOTAL	
CA	13 - 40 (9.5 - 30)	180 — 250 300 — 380	1 1/2 (DN38)	42	1130	1000	575	402	930	560	M M 52x2	200	55	245	300
								313							
CA/A	13 - 50 (9.5 - 37)	180 — 250 300 — 380	1 1/2 (DN38)	42	1130	1490	575	402	930	560	M M 52x2	315	160	310	470
								313							
CG	16 - 100 (12 - 75)	300 — 380 440 — 650	1 1/2 (DN38)	42	1260	1490	775	313	1060	765	M M 52x2 2" GAS	360	220	530	750
								313							
CG-XL	16 - 100 (12 - 75)	300 — 380 440 — 650	1 1/2 (DN38)	42	1560	1490	775	313	1360	765	M M 52x2 2" GAS	400	220	830	1050
								313							

\*GENERAL ALLOWANCES: ±5 mm"