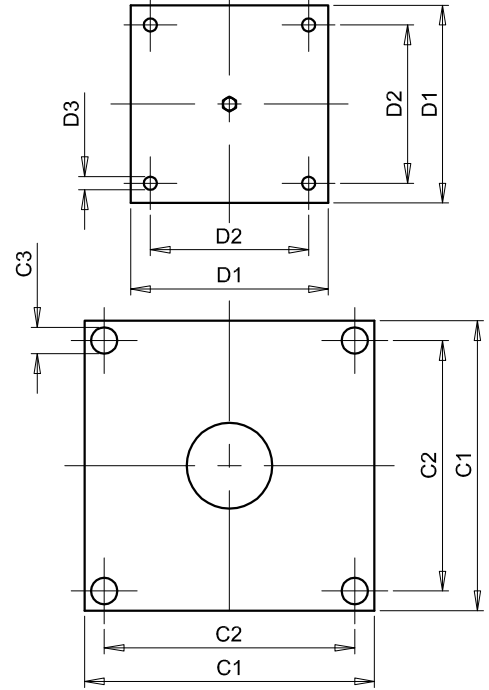
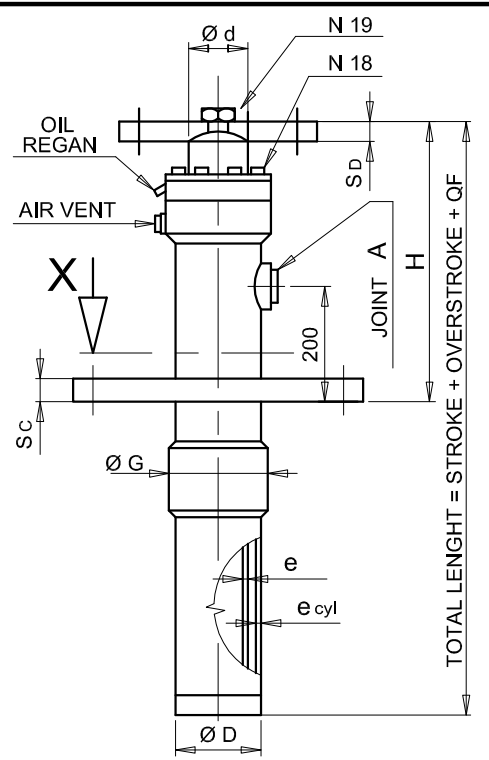


SEE HYDRAULIC POWER UNIT

A	M10x45		M12x45				M14x55				M16x65		M18x70	
	M24x70 Ch=36	M30x60 Ch=46	235	235	235	250	250	250	250	295	295	295	295	
N18														
N19														
Q F	235	235	235	235	235	250	250	250	250	295	295	295	295	
H	580	580	580	580	580	600	600	600	600	660	660	660	660	
ØG	/	133	133	133	133	190	190	190	202	249	278	304	304	
e cyl	3.6	4	4	4	4	5	5	5	5.6	8	8	10	10	
ØD	101.6	114.3	114.3	114.3	114.3	159	159	159	177.8	219.1	244.5	273	273	
OIL l x mt	7	9	9	9	9	17.5	17.5	17.5	22	32.5	41	50	50	
WEIGHT Kg	15	16	19	20	23	26	26	26	26	26	26	26	26	
	97	101	108	113	122	132	132	132	132	132	132	132	132	
e	-	-	-	5	7.5	7.5	7.5	7.5	7.5	7.5	7.5	7.5	7.5	
	5	5	7.5	7.5	7.5	7.5	7.5	7.5	7.5	7.5	7.5	7.5	7.5	
ROD Ød	50	60	70	80	85	90	100	110	120	130	150	160	180	200



SECTION X

NOTE: - MORIS ITALIA PRESCRIBES THE ADOPTION OF THE RAM PROTECTION RING,  
 FOR SINGLE PIECE RAMS WITH LENGHT GREATER THAN 4,5 m FOR DIAMETERS FROM 70 TO 90 mm,  
 FOR SINGLE PIECE RAMS WITH LENGHT GREATER THAN 5 m FOR DIAMETER OF 100 mm,  
 FOR SINGLE PIECE RAMS WITH LENGHT GREATER THAN 6 m FOR DIAMETERS FROM 110 TO 130 mm.  
 IN ORDER TO AVOID BUMPS AND DEMAGE DURING THE TRANSPORT.  
 - ROD UPPER PLATE IS OF OSCILLATING TYPE  
 - ROD WITH FRONT SHOCK ABSORBER (ALL OUT) 35 mm.

ROD Dia	C 1	C 2	C 3	S C	D 1	D 2	D 3	S D
50 / 100	350	280	20	25	260	210	16	25
110 / 150	400	330	28	30	350	290	20	25
160 / 238	560	460	30	35	350	290	20	30

UT

DIRECT UNDERGROUND 1 : 1 RAM

DATE 07/17  
 DWG Nr 9150