

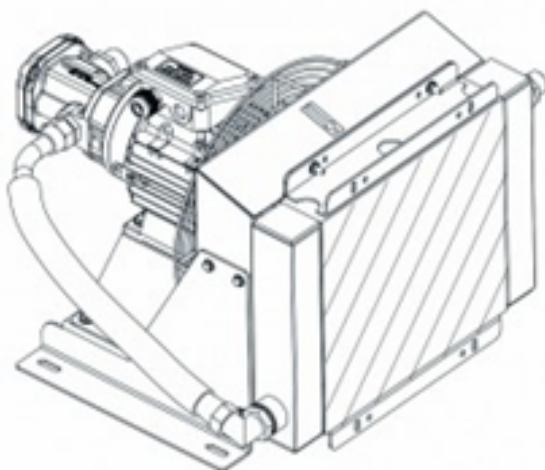


engineering your **L**IFE  
elevating your **F**E

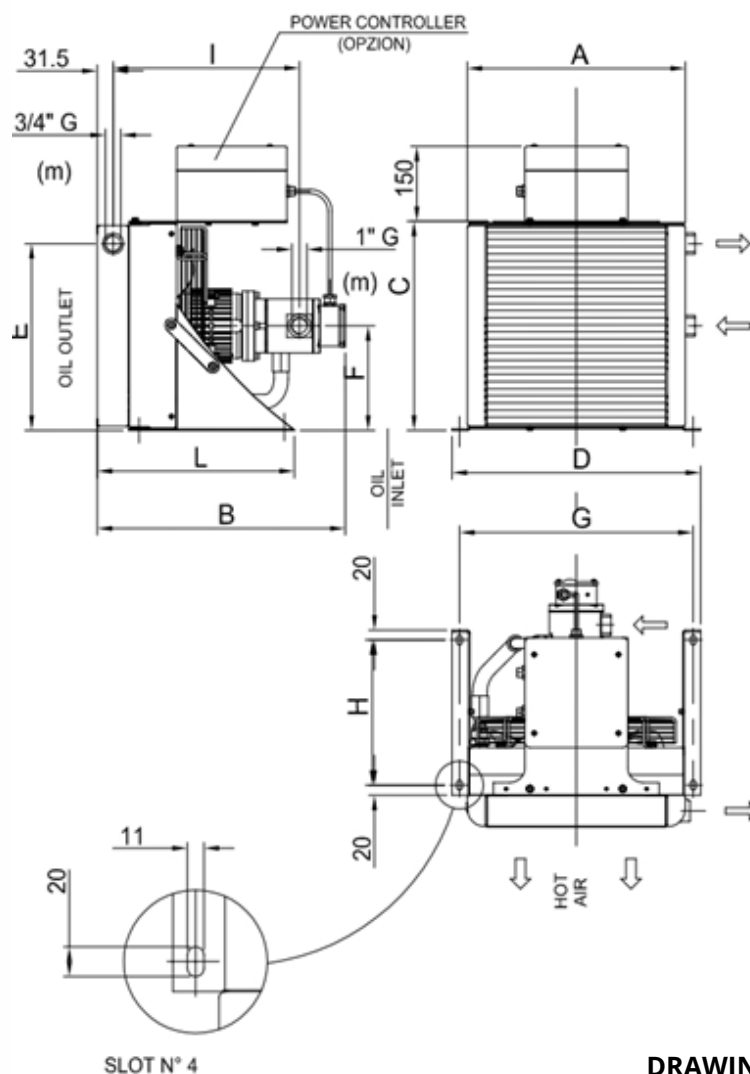
# COOLANT UNITS HEAT REVOLVERS

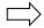
Coolant units – heat revolvers are usually demanded in projects with many engine starts per hour or in engine rooms with high temperatures.

They are capable to effectively cool down engines up to 30 hp and keep the lubricant in low temperatures.



## A. FEATURES



		SCAMB 5/10 (25)	SCAMB 20 (35)	SCAMB 30 (45)
ABSORBED POWER	KW	0.8	1.1	1.1
PUMP FLOW	lt/1"	40	40	40
AIR FLOW 	mc/h	700	1300	2200
NOISE LEVEL AT 1m DISTANCE	dB (A)	62	68	73
WEIGHT	Kg	29.5	33	37.6

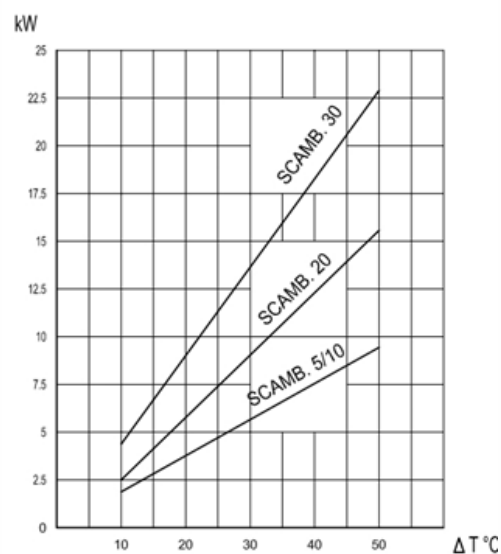
  

TYPE	A	B	C	D	E	F	G	H	I	L
SCAMB 5/10	410	550	360	494	285	183	445	250	480,5	383
SCAMB 20	450	547	445	534	360	225	485	250	477,5	380
SCAMB 30	500	567	515	584	430	260	535	250	497,5	400

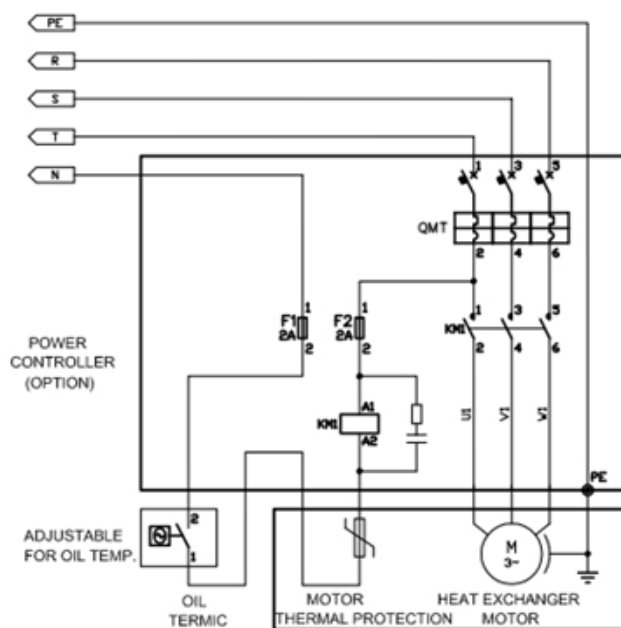
## A.1. PERFORMANCE DIAGRAM

Efficiency diagrams show the quantity of heat dispersed in kW as function of the difference between oil temperature and room temperature.

(See dwg 2)

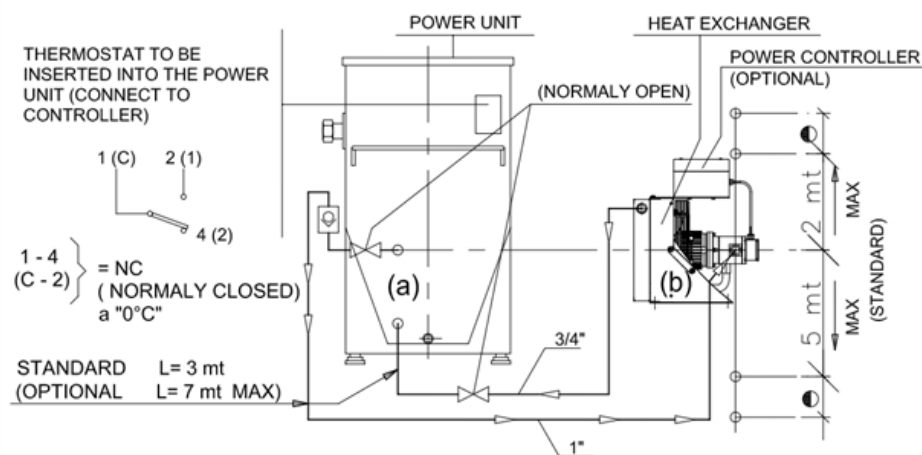


## A.2. ELECTRICAL WIRING



## B. IMPORTANT NOTES

- Check if power supply voltage and frequency are the same as indicated on data plate. (230/400V - 50/60Hz – three-phase)
- Before hand over it is necessary to check if the fan rotation direction is clockwise, as indicated by the arrow label. Testing time should not exceed 10 seconds.
- Moris standard. See diagram for heat exchanger positioning with respect to oil ports (a,b). Standard hoses are 3 meters long. Up to 7 meters as option.
- In case of operating conditions different than Moris standard an auxiliary pump is necessary. Please contact Moris Hellas.
- An adequate motor starting power system is necessary. Moris Hellas can supply this optional power controller.



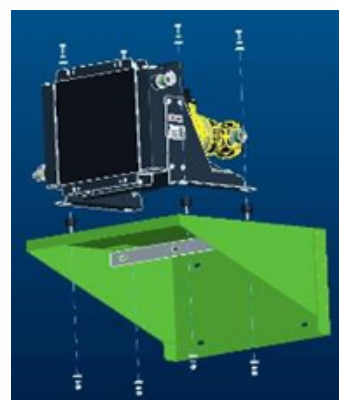
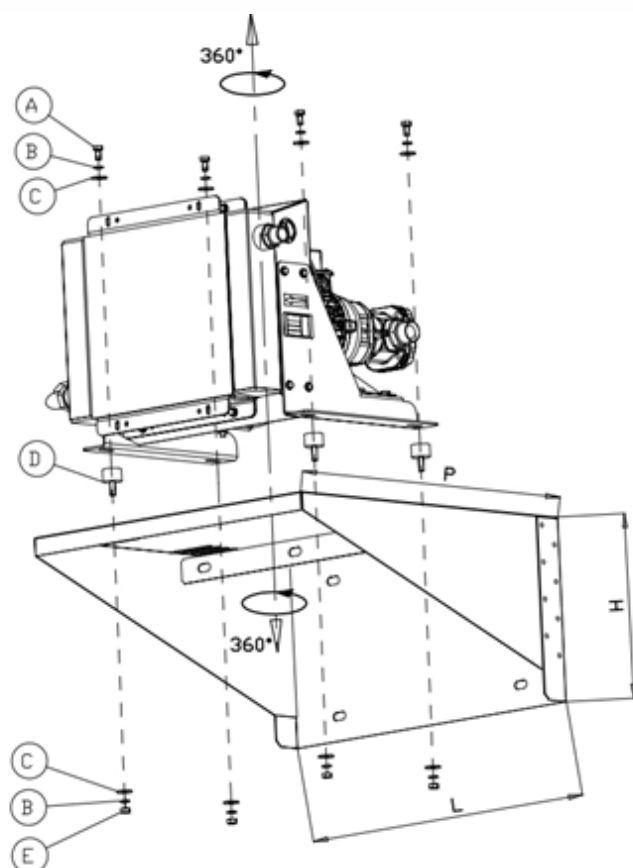
DRAWING 2

## C. SUPPORT BRACKET (OPTIONAL)

Installation instructions:

The support bracket allows for the coolant installation on 4 different orientations (90° apart).

It is recommended to channel the heated air outside the machine room, (via a room window or via a forced air conveyor).



SUPPORT TYPE				SP20	SP20	SP30
HEAT EXCHANGER TYPE				SCAMB 5/10	SCAMB 20	SCAMB 30
COMPONENTS			Q.			
A	SCREW		N°4	M8x16 UNI5739	M8x16 UNI5739	M8x16 UNI5739
B	SPLIT WASHER		N°8	M8 UNI1751	M8 UNI1751	M8 UNI1751
C	OVERSIZE WASHER		N°8	M8 UNI6593	M8 UNI6593	M8 UNI6593
D	ANTIVIBRATION		N°4	5011/5	5011/5	5011/5
E	NUT		N°4	M8 UNI5588	M8 UNI5588	M8 UNI5588
REINFORCEMENT + SUPORT				H000290AA-A0 + H000284AA-B0	H000290AA-A0 + H000284AA-B0	H000290AA-A0 + H000292AA-A0
DIMENSIONS LxHxP (mm)				535x300x600	535x300x600	595x300x600
WEIGHT of only support (Kg)				11	11	12
TOOLS FOR ASSEMBLY				SPANNER N° 13	SPANNER N° 13	SPANNER N° 13
ANCHORS FOR FIXING SUPPORT ARE EXCLUDED, TO BE SUPPLIED BY THE CUSTOMER.						